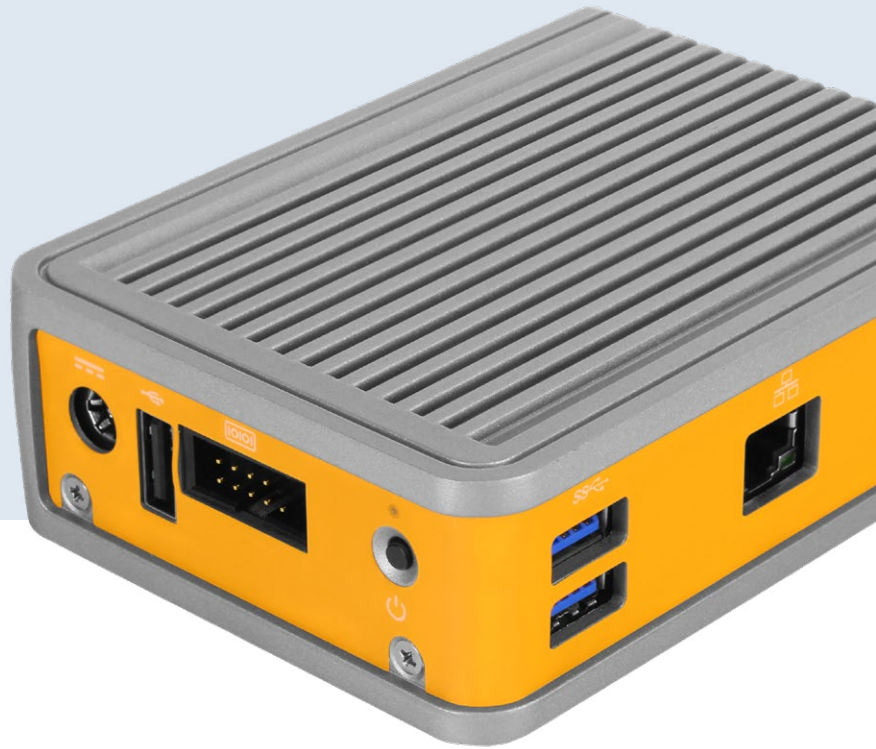


CL200G-10

Our Smallest Fanless PC

Ultra-reliable and feature rich, the CL200 Series combines the ease of x86 architecture with our Hardshell™ Fanless Technology in an Ultra Small Form Factor.

onlogic.com/cl200g-10



IoT Ready (4G)

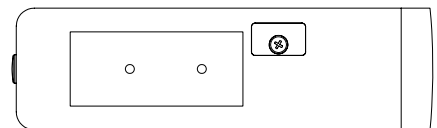
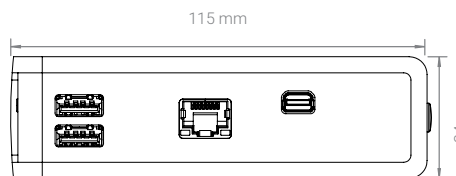
Ready for the Industrial IoT edge, the CL200 Series is configurable with 4G LTE capability or Wi-Fi and Bluetooth - all in one ultra-small device.

Sealed, Fanless Design

Hardshell Fanless Technology seals components in a durable, ventless enclosure that cools and protects the system. Measuring at just 34 mm x 115 mm x 82 mm, the CL200 Series installs virtually anywhere.

x86 Architecture

The CL200 Series makes development easy and integration seamless, thanks to its x86 architecture. Backed by a stable Linux or Windows 10 OS, the CL200 Series lets you focus on optimizing your application.



US Office

Phone: +1 802 861 2300 | Email: info@onlogic.com | www.onlogic.com

EU Office

Phone: +31 088 5200 700 | Email: info@onlogic.eu | www.onlogic.com

System

Processor	Intel Celeron N3350
Processor Speed	1.1 GHz
Processor Cores	2
Integrated Graphics	Intel HD Graphics 500
Memory	LPDDR4 2 GB

Rear I/O

USB	1 USB 2.0 port
Serial	1 COM Port (RS-232)
Power	1 DC Input Jack (12 V)
Other	Power Button, power indicator LED 1 MicroSD Card slot

Front I/O

Ethernet	2 USB 3.0 Ports
USB	1 Gb LAN Port with Realtek RTL8111G
Video	1 Mini-DisplayPort

Side I/O

Other	4 Antenna jacks
-------	-----------------

Expansion & Features

Expansion & Storage	1 PCIe Mini Card (Half-Height) MicroSD Card mSATA (Shared PCIe Mini Card Slot)
Features	8 GB onboard EMMC storage

Mechanical

Dimensions (WxHxD)	115 mm x 82 mm x 34 mm
Mounting Options	DIN-mount VESA-mount Wall-mount

Environmental & Regulatory

Operating Temperature	0°C ~ 40°C
Certifications	2002/96/EC (WEEE Directive) 2011/65/EU (RoHS 2 Directive) Additional Safety and EMC certifications pending CB scheme CE EN 55024 EN 55032 EN 62368-1 FCC 47 CFR Part 15 IEC 62368-1 IP50 UL Listed

US Office

Phone: +1 802 861 2300 | Email: info@onlogic.com | www.onlogic.com

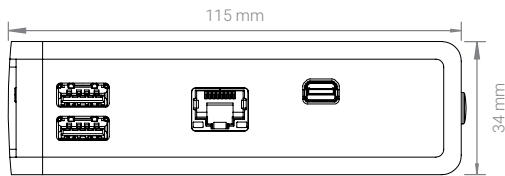
EU Office

Phone: +31 088 5200 700 | Email: info@onlogic.eu | www.onlogic.com

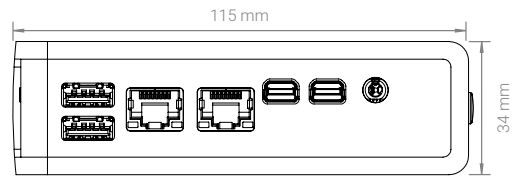
CL200G-10 Dimensional Drawings

Industrial USFF Edge Device

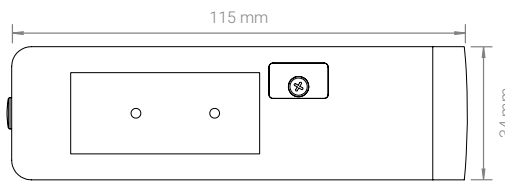
All measurements in mm



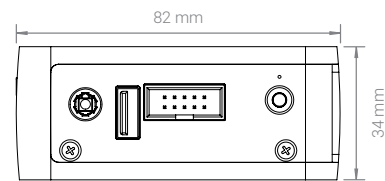
CL200G-10 FRONT



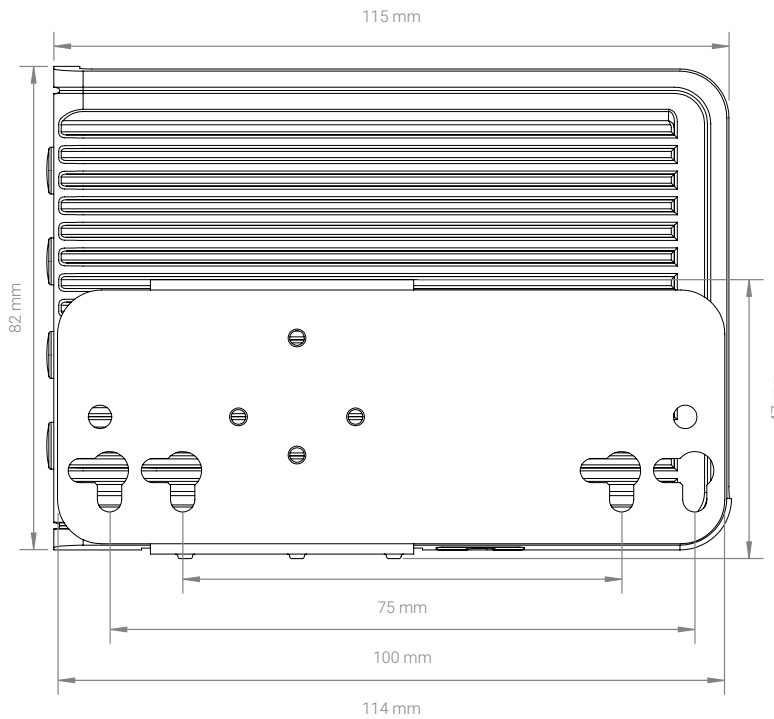
CL210G-10 FRONT



BACK



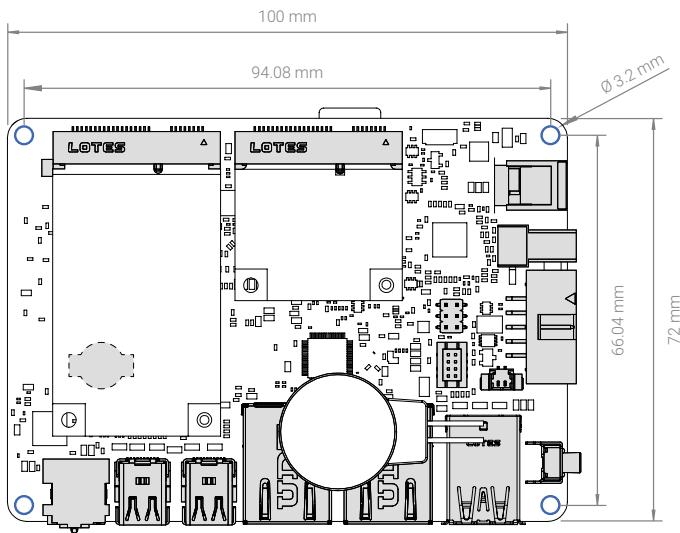
SIDE



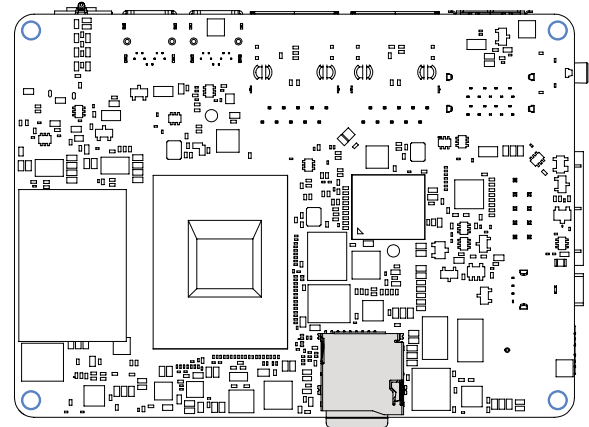
TOP

EMP162 Dimensional Drawings

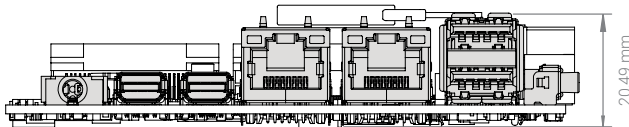
All measurements in mm



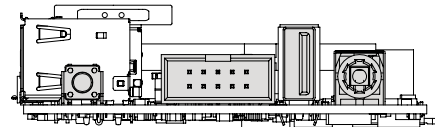
TOP



BOTTOM



FRONT



SIDE